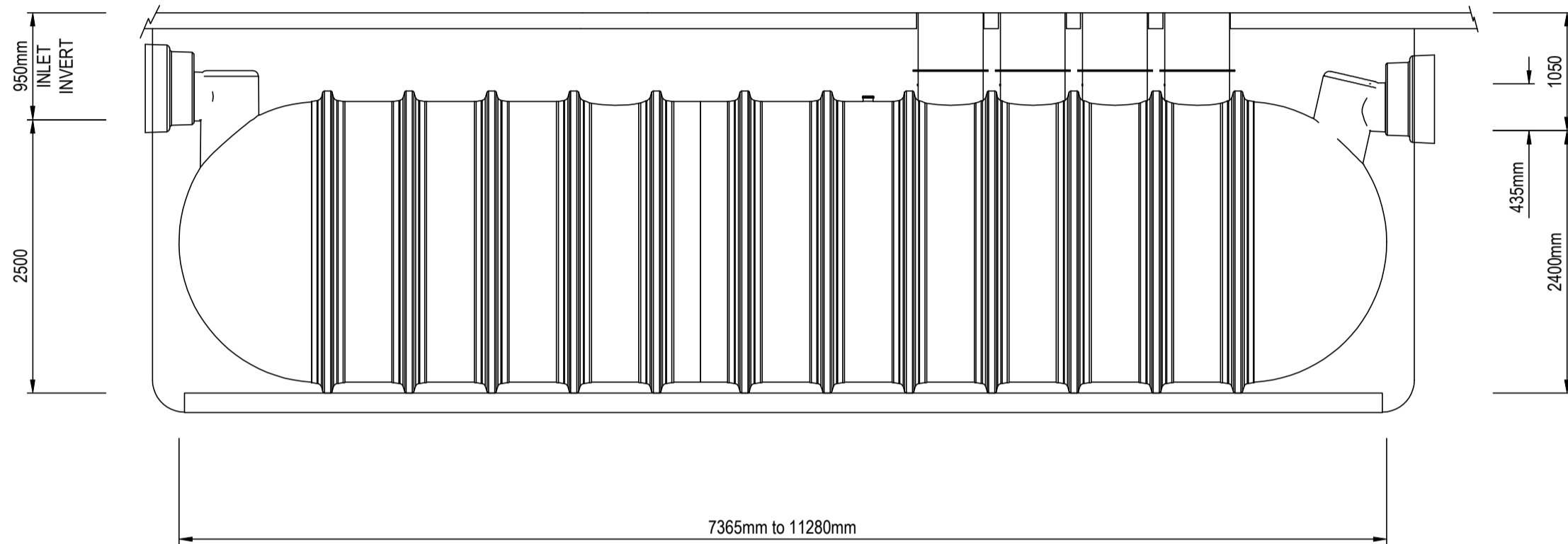
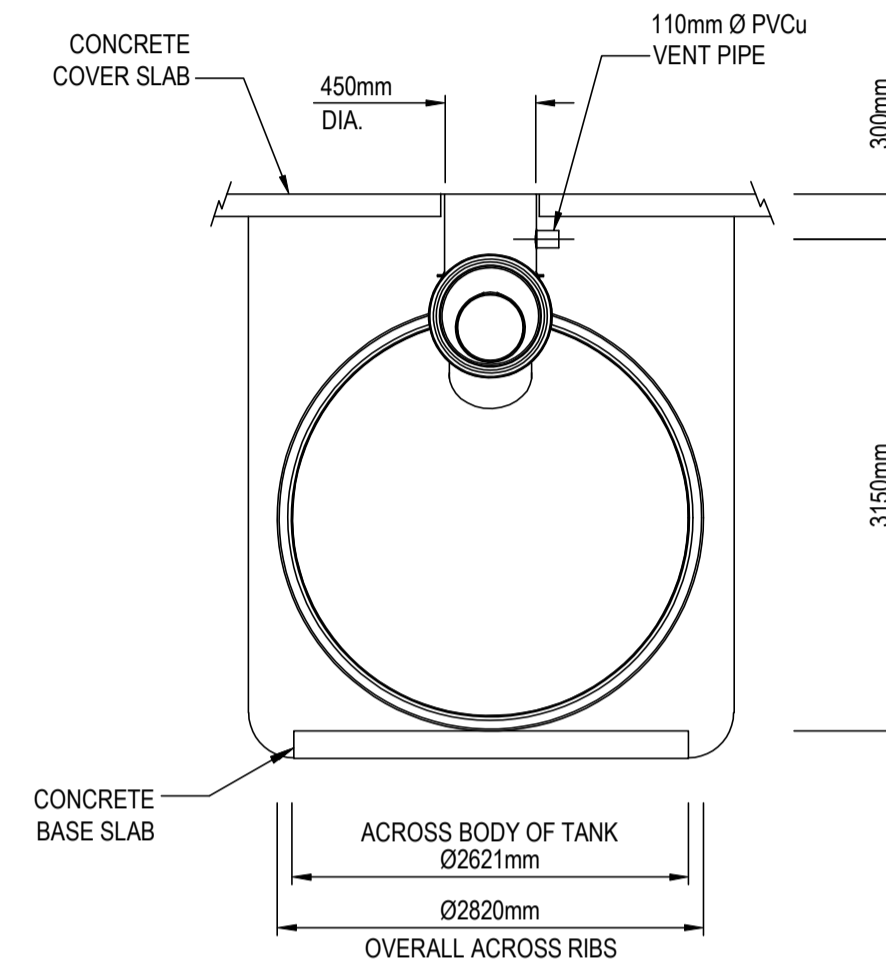


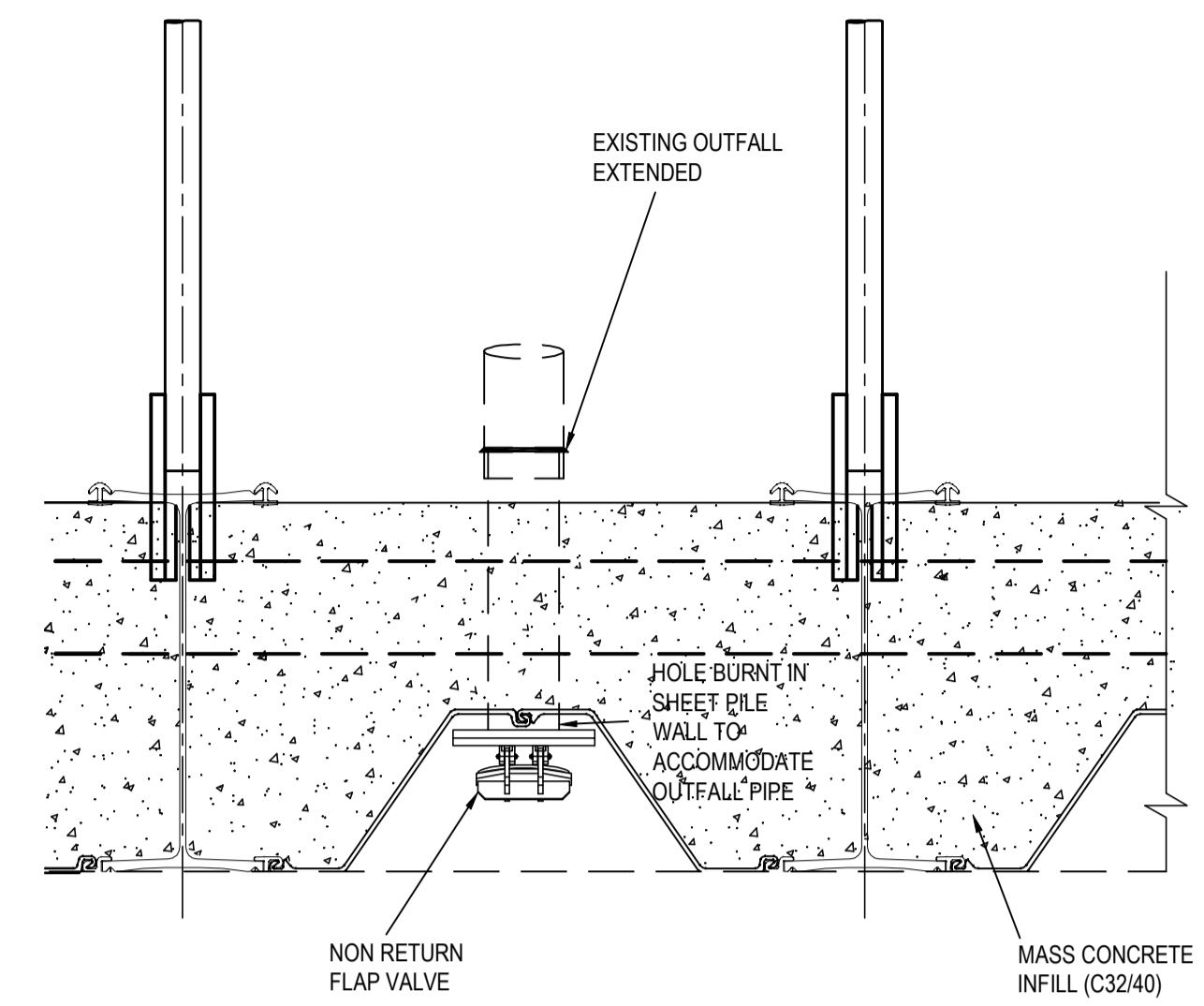
**GENERAL ARRANGEMENT OF CLASS 1 TYPE FULL RETENTION INTERCEPTOR [1:50]**



**ELEVATION ON CLASS 1 TYPE FULL RETENTION INTERCEPTOR [1:50]**

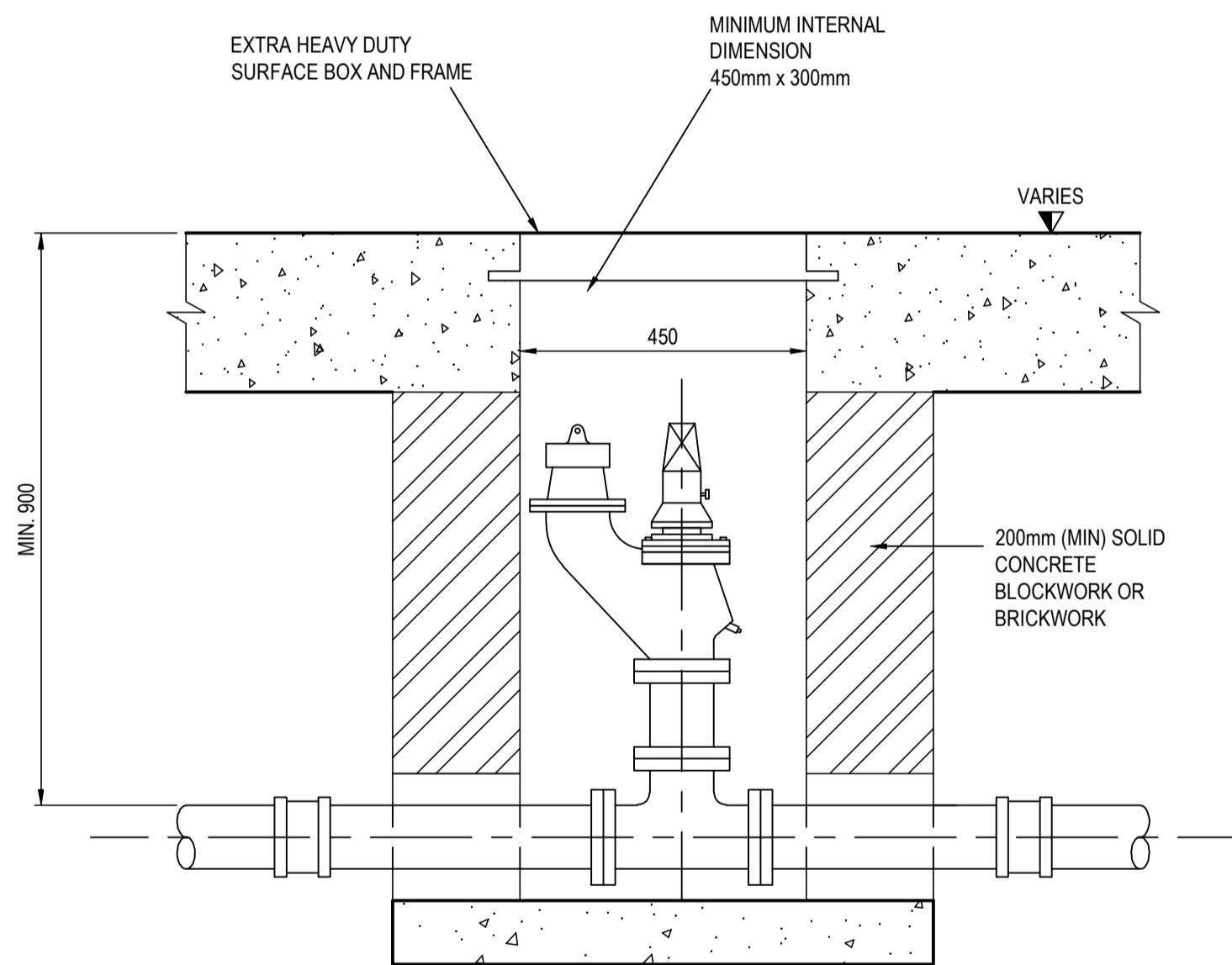


**TYPICAL SECTION THROUGH INTERCEPTOR [1:50]**



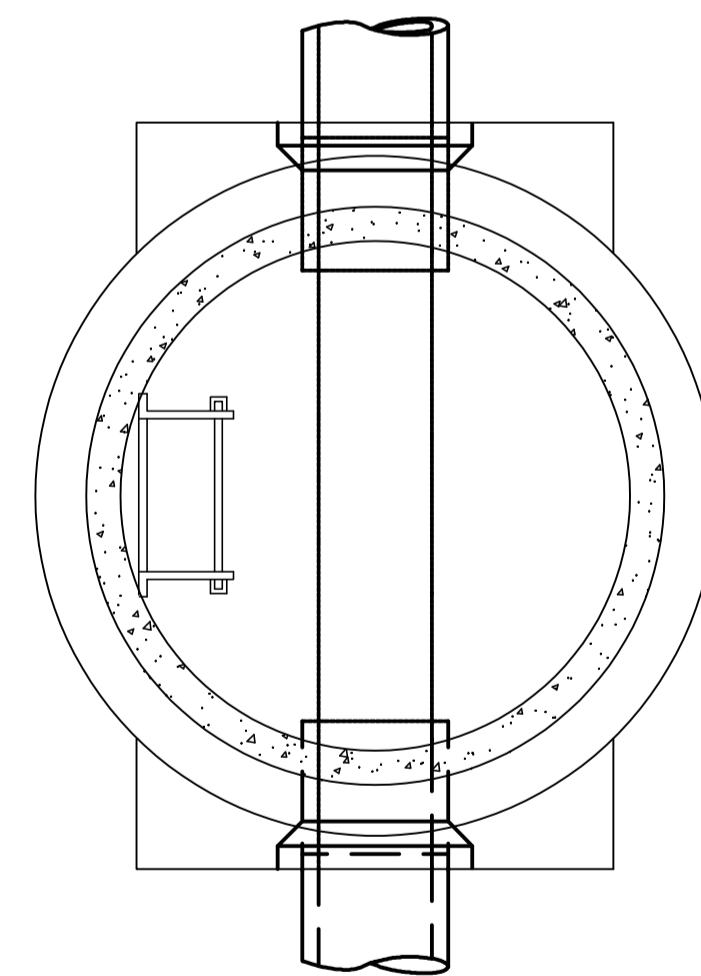
**TYPICAL PLAN OF OUTFALL THROUGH MAIN STEEL WALL [1:20]**

- NOTES**
- Verifying Dimensions. The contractor shall verify dimensions against such other drawings or site conditions as pertain to this part of the work.
  - Existing Services. Any information concerning the location of existing services indicated on this drawing is intended for general guidance only. It shall be the responsibility of the contractor to determine and verify the exact horizontal and vertical alignment of all cables, pipes, etc. (both underground and overhead) before work commences.
  - Issue of Drawings. Hard copies, dwf and pdf will form a controlled issue of the drawing. All other formats (dwg, dxf etc.) are deemed to be an uncontrolled issue and any work carried out based on these files is at the recipient's own risk. RPS will not accept any responsibility for any errors arising from the use of these files, either by human error or by the recipient. Listing of un-dimensioned measurements, compatibility issues with the recipient's software, and any errors arising when these files are used to aid the recipient's drawing production, or setting out on site.
  - DATUM: Ordnance Datum Main (Unless Noted Otherwise)

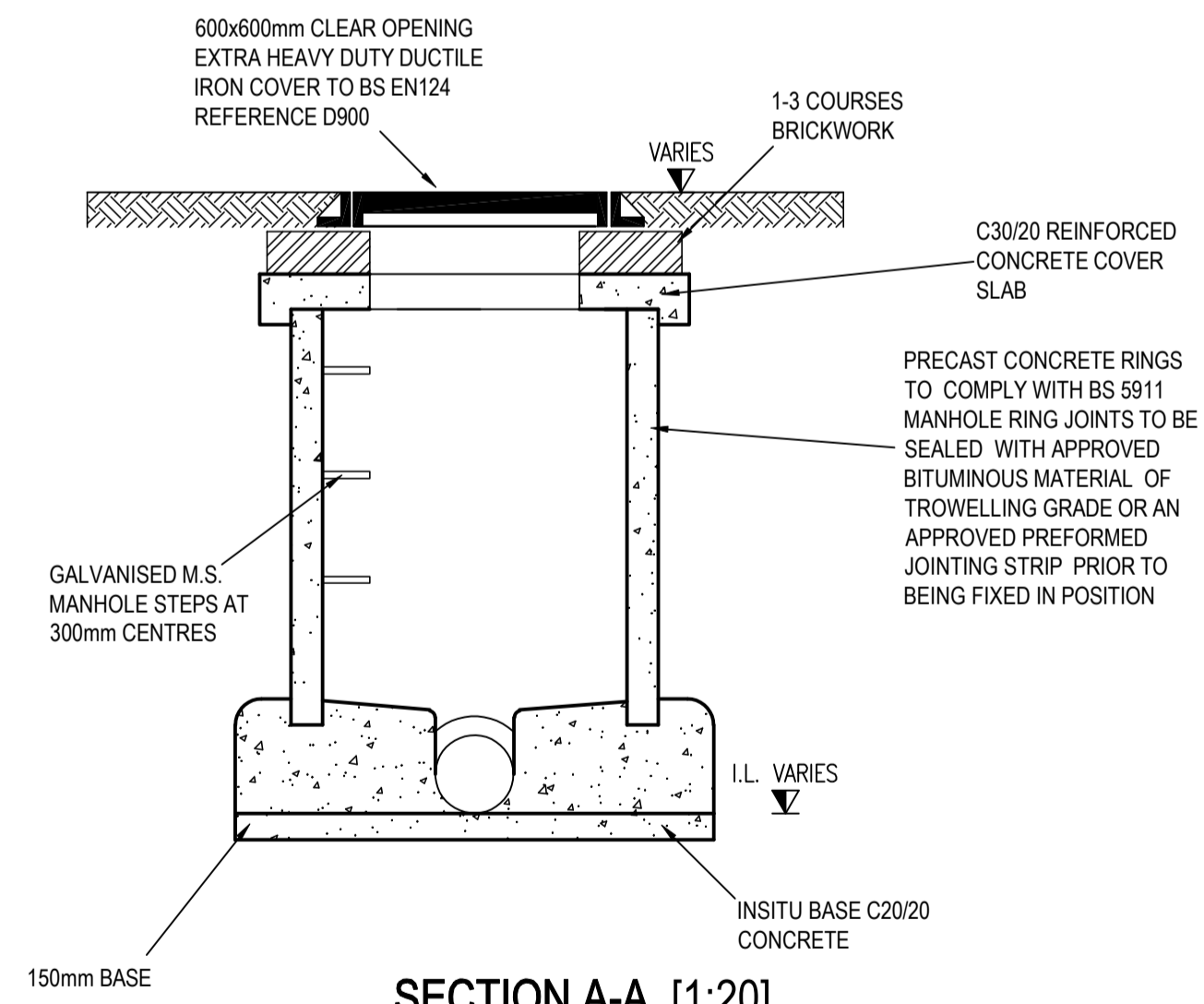


**FIRE HYDRANT DETAIL [1:10]**

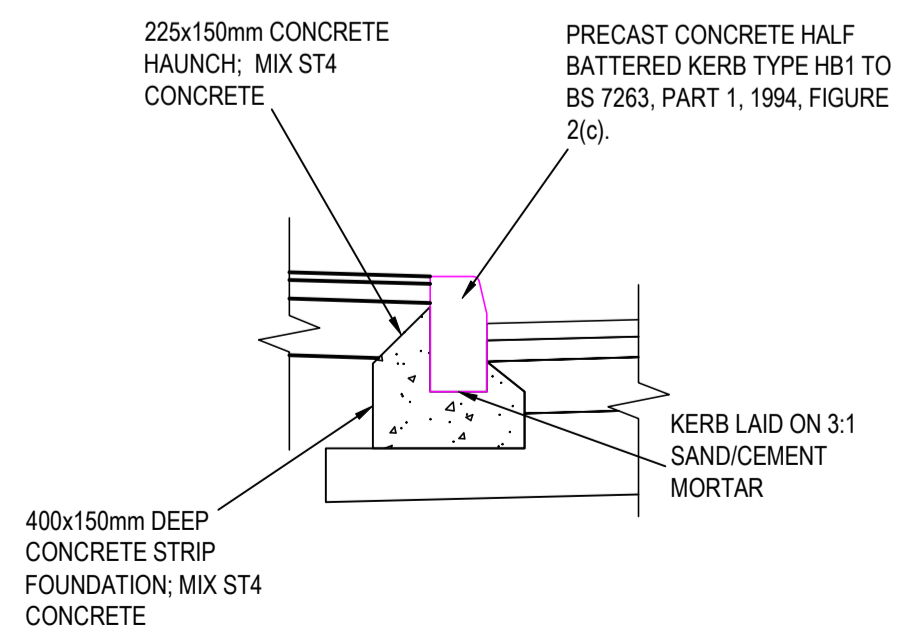
**MANHOLE DETAIL TYPE 'C' MAX DEPTH FROM COVER TO SOFFIT = 3.0m**



**SECTIONAL PLAN [1:20]**



**SECTION A-A [1:20]**  
REFER TO NRA DETAILS RCD/500/6 FOR DETAILS



**TYPICAL PRECAST KERB DETAIL K2 [1:20]**

- KERB LAID AND BEDDED IN ACCORDANCE WITH BS 7263, PART 2 AND SPEC CL 1101
- 3mm-6mm WIDE MORTARED JOINT BETWEEN ADJACENT KERB UNITS; 3:1 SAND/CEMENT MORTAR.
- UPSTAND: 125mm

| rev | amendments | drawn | date |
|-----|------------|-------|------|
|     |            |       |      |

**RPS** Elmwood House 74 Boucher Road Belfast BT12 6RZ

T +44 (0) 28 90 667914  
F +44 (0) 28 90 668286  
W www.rpsgroup.com/ireland  
E ireland@rpsgroup.com

Client  
**COMHLAcht CHALAFORT ÁTHA CLIATH DUBLIN PORT COMPANY**

Project  
**Alexandra Basin Redevelopment**

Title  
**Typical Service Details Sheet 1**

Architect  
-

|                            |                  |                           |
|----------------------------|------------------|---------------------------|
| Drawing Status<br>Planning | Sheet Size<br>A1 | Drawing Scale<br>1:50 UNO |
|----------------------------|------------------|---------------------------|

|   |          |
|---|----------|
| Drawing Number<br><b>IBM0498-GA-302</b> | Rev<br>- |
|---|----------|

|                          |                  |                  |                          |
|--------------------------|------------------|------------------|--------------------------|
| Project Leader<br>S.A.H. | Drawn By<br>M.H. | Date<br>Jan 2014 | Initial Review<br>S.A.H. |
|--------------------------|------------------|------------------|--------------------------|

